

Lenovo® recommends Windows 8.



THINKCENTRE® M79 DESKTOP

A POWERHOUSE FOR PUBLIC SECTOR AND LARGE ENTERPRISE.

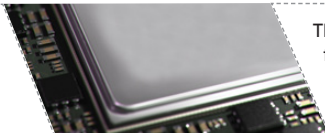
HIGHLY SECURE. EASY TO MANAGE. POWERFUL PERFORMANCE.

Power up the ThinkCentre® M79 Mini Tower or Small Form Factor (SFF) Desktop remotely using the DASH 1.1 Remote Power Control and experience a superior business desktop. Designed with the Public Sector in mind, M79 delivers superior manageability, robust reliability, unique security features combined with the enhanced performance of the latest AMD Kaveri APU and compliance with environmental norms.



WHY BUY THE THINKCENTRE® M79?

1 POWERFUL PERFORMANCE



The latest AMD Kaveri APU delivers up to 13% faster performance and up to 50% enhanced GFX (graphics) performance¹.

2 SUPERIOR MANAGEABILITY



Dash 1.1 Remote Management software gives you remote power control and robust, secure out-of-band management.

3 ENHANCED SECURITY



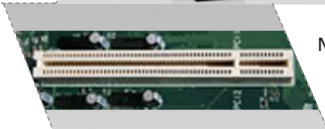
Lenovo-exclusive Smart USB Protection ensures USB ports are available for a keyboard and mouse, yet blocks unauthorized USB data copying. TPM 1.2 / Asset ID ensures data is safe and secure.

4 GREEN LEADERSHIP



The latest Desktop Power Manager provides real-time power consumption detection. Certifications include ENERGY STAR 6.0, EPEAT® Gold and others.

5 LEGACY AWARENESS



Native PCI slot ensures a great fit with legacy devices and Windows is available to save the expense of an upgrade.

WHO NEEDS THE THINKCENTRE® M79?

1 Organizations with extremely sensitive data or critical need for data security.

2 Public sector organizations concerned about compatibility issues and upgrade costs.

3 Organizations that place a premium on desktops with superior performance and manageability.

4 Public sector organizations that need a high-performance, secure desktop with large storage capacity.

Lenovo® recommends Windows 8.



SPECIFICATIONS

PERFORMANCE

Processor
AMD Kaveri APU

Operating System
Windows 8.1 Pro (64bit)
Windows 8.1 (64bit)
Windows 8.1 Single Language (64bit)
Windows 8.1 Chinese Language (64bit)
Windows 7 Professional (32bit)
Windows 7 Professional (64bit)
No OS/DOS

Graphics
AMD Graphics²

Memory
PC3-12800 DDR3-1600 UDIMM

DESIGN

Chip set
AMD A78

Storage
250GB/500GB/1TB/2TB³
500GB/1TB SSHD
2.5" 128GB/180GB SSD
2.5" Opal SSD HDD 320GB3

Ports and Slots
(2) USB 2.0 Front
(2) USB 3.0 Rear
(2) USB 2.0 Rear¹

Security
Chip Trusted Platform Module (TPM 1.2)
USB Individual Disable/Enable
Computrace Support/Kensington Slot
Asset ID

WiFi
Integrated 10M/100M/1000M Gigabit Ethernet⁴
WiFi IEEE 802.11b/g/n or a/b/g/n or ac/b/g/n⁵

PSU
Single Output PSU with Max. 450 W via SpB

Dimensions (W x D x H)
Tower: 6.30" x 16.61" x 15.28"
(160 mm x 422 mm x 388 mm)
SFF : 3.94" x 15.16" x 13.31"
(100 mm x 385 mm x 338 mm)

Weight
Tower: 9.40 kg (20.72 lbs)
SFF : 6.60 kg (14.55 lbs)

SOFTWARE

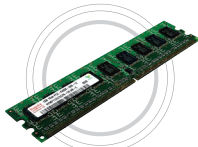
Lenovo® Companion
Lenovo® Support
Lenovo® Reach (EN and FR – US and Canada)
ThinkCenter® Start Pin Config
AccuWeather
Evernote®
Norton® Internet Security 2014 with 30 days of virus protection
Norton® Studio
Microsoft® Office Trial (Not JP)
Go Movie (HK only)
Kingsoft Browser (CS only)
Nitro® Pro 8 (Limited languages)
Hightail – Lenovo® Cloud storage – Metro (Not CS)
Pokkii (WW except JP and KR)
Yahoo Deals (HK only)
Cyberlink – PowerDVD
Cyberlink – PowerDVD Create, Power2Go and Power Producer
Fingerprint SW – Softflex Omnipass
Desktop Power Manager
Device Stage – ThinkPad
Lenovo® Experience Improvement
Lenovo® Solution Center
Lenovo® User Guide, User Guide Viewer
OOBE Customization
Password Manager
System Update (TVSU)
JP i-filter (JP only)
ThinkVantage® Themes
Warranty Viewer
Help and Support

1 Optional
2 AMD Integrated, Optional Discrete graphics

ACCESSORIES



ThinkVision® Monitor



PC3-12800 DDR3-1600 UDIMM Memory



DisplayPort to Dual-DisplayPort Monitor Cable



Graphics Card



Lenovo® USB Soundbar



Lenovo® Ultraslim Wireless Keyboard and Mouse Combo



ThinkCentre® Extend Arm

LENOVO SERVICES

Lenovo® offers a comprehensive portfolio of services to support and protect your ThinkCentre® investment. Focus on your customers and business, not your IT.

PRIORITY TECHNICAL SUPPORT*

Makes your priority, our priority. 24x7 priority call routing to advanced-level technicians, electronic incident tracking, and rapid response and resolution.

WARRANTY UPGRADES - ONSITE AND NEXT BUSINESS DAY

Maximizes PC uptime and productivity by providing convenient, fast repair service the next business day.

WARRANTY EXTENSIONS

(1-TO-4 YEARS TOTAL DURATION)
This fixed-term, fixed-cost service helps accurately budget for PC expenses, protect your valuable investment and potentially lower the cost of ownership over time.

PART NUMBER XXXXX
PRICE: XXX

* Not available in all regions

WHY THINKCENTRE®?

- 1 Lowest failure rates in the industry*** - High-quality materials, exceptional engineering and 2000+ quality tests keep your data safe.
- 2 Power-packed to let you do more** - Feature-rich offerings for enhanced performance, collaboration, security and manageability.
- 3 Car-hood serviceability** - Tool-less entry shortens repair time and end user downtime.
- 4 Save money and the environment** - Use the highest % of recycled materials and save up to 70% on power bills.
- 5 Innovation in many forms** - From the smallest commercial desktop (Tiny), cool and quiet towers and ultra-small desktops to stylish touch-enabled all-in-ones, there's a ThinkCentre for every need.

*TBR Large Enterprise Repair Rate Study 2011